

SCHEDULE OF JOINERY

MD	MAIN DOOR	3'-3" x 7'-0"	(0.99X2.13)
D1	DOOR	3'-0" x 7'-0"	(0.91X2.13)
D2	DOOR	3'-0" x 6'-6"	(0.91X1.98)
D3	DOOR	3'-0" x 6'-6"	(0.91X1.98)
W1	WINDOW	5'-0" x 7'-0"	(1.52X2.13)
W2	WINDOW	5'-0" x 6'-6"	(1.52X1.98)
W3	WINDOW	5'-0" x 6'-6"	(1.52X1.98)
W4	WINDOW	5'-0" x 6'-6"	(1.52X1.98)
W5	WINDOW	5'-0" x 6'-6"	(1.52X1.98)
W6	WINDOW	5'-0" x 6'-6"	(1.52X1.98)
W7	WINDOW	5'-0" x 6'-6"	(1.52X1.98)
W8	WINDOW	5'-0" x 6'-6"	(1.52X1.98)
W9	WINDOW	5'-0" x 6'-6"	(1.52X1.98)
W10	WINDOW	5'-0" x 6'-6"	(1.52X1.98)
W11	WINDOW	5'-0" x 6'-6"	(1.52X1.98)
W12	WINDOW	5'-0" x 6'-6"	(1.52X1.98)
W13	WINDOW	5'-0" x 6'-6"	(1.52X1.98)
W14	WINDOW	5'-0" x 6'-6"	(1.52X1.98)
W15	WINDOW	5'-0" x 6'-6"	(1.52X1.98)
W16	WINDOW	5'-0" x 6'-6"	(1.52X1.98)
W17	WINDOW	5'-0" x 6'-6"	(1.52X1.98)
W18	WINDOW	5'-0" x 6'-6"	(1.52X1.98)
W19	WINDOW	5'-0" x 6'-6"	(1.52X1.98)
W20	WINDOW	5'-0" x 6'-6"	(1.52X1.98)
W21	WINDOW	5'-0" x 6'-6"	(1.52X1.98)
W22	WINDOW	5'-0" x 6'-6"	(1.52X1.98)
W23	WINDOW	5'-0" x 6'-6"	(1.52X1.98)
W24	WINDOW	5'-0" x 6'-6"	(1.52X1.98)
W25	WINDOW	5'-0" x 6'-6"	(1.52X1.98)
W26	WINDOW	5'-0" x 6'-6"	(1.52X1.98)
W27	WINDOW	5'-0" x 6'-6"	(1.52X1.98)
W28	WINDOW	5'-0" x 6'-6"	(1.52X1.98)
W29	WINDOW	5'-0" x 6'-6"	(1.52X1.98)
W30	WINDOW	5'-0" x 6'-6"	(1.52X1.98)
W31	WINDOW	5'-0" x 6'-6"	(1.52X1.98)
W32	WINDOW	5'-0" x 6'-6"	(1.52X1.98)
W33	WINDOW	5'-0" x 6'-6"	(1.52X1.98)
W34	WINDOW	5'-0" x 6'-6"	(1.52X1.98)
W35	WINDOW	5'-0" x 6'-6"	(1.52X1.98)
W36	WINDOW	5'-0" x 6'-6"	(1.52X1.98)
W37	WINDOW	5'-0" x 6'-6"	(1.52X1.98)
W38	WINDOW	5'-0" x 6'-6"	(1.52X1.98)
W39	WINDOW	5'-0" x 6'-6"	(1.52X1.98)
W40	WINDOW	5'-0" x 6'-6"	(1.52X1.98)
W41	WINDOW	5'-0" x 6'-6"	(1.52X1.98)
W42	WINDOW	5'-0" x 6'-6"	(1.52X1.98)
W43	WINDOW	5'-0" x 6'-6"	(1.52X1.98)
W44	WINDOW	5'-0" x 6'-6"	(1.52X1.98)
W45	WINDOW	5'-0" x 6'-6"	(1.52X1.98)
W46	WINDOW	5'-0" x 6'-6"	(1.52X1.98)
W47	WINDOW	5'-0" x 6'-6"	(1.52X1.98)
W48	WINDOW	5'-0" x 6'-6"	(1.52X1.98)
W49	WINDOW	5'-0" x 6'-6"	(1.52X1.98)
W50	WINDOW	5'-0" x 6'-6"	(1.52X1.98)
W51	WINDOW	5'-0" x 6'-6"	(1.52X1.98)
W52	WINDOW	5'-0" x 6'-6"	(1.52X1.98)
W53	WINDOW	5'-0" x 6'-6"	(1.52X1.98)
W54	WINDOW	5'-0" x 6'-6"	(1.52X1.98)
W55	WINDOW	5'-0" x 6'-6"	(1.52X1.98)
W56	WINDOW	5'-0" x 6'-6"	(1.52X1.98)
W57	WINDOW	5'-0" x 6'-6"	(1.52X1.98)
W58	WINDOW	5'-0" x 6'-6"	(1.52X1.98)
W59	WINDOW	5'-0" x 6'-6"	(1.52X1.98)
W60	WINDOW	5'-0" x 6'-6"	(1.52X1.98)
W61	WINDOW	5'-0" x 6'-6"	(1.52X1.98)
W62	WINDOW	5'-0" x 6'-6"	(1.52X1.98)
W63	WINDOW	5'-0" x 6'-6"	(1.52X1.98)
W64	WINDOW	5'-0" x 6'-6"	(1.52X1.98)
W65	WINDOW	5'-0" x 6'-6"	(1.52X1.98)
W66	WINDOW	5'-0" x 6'-6"	(1.52X1.98)
W67	WINDOW	5'-0" x 6'-6"	(1.52X1.98)
W68	WINDOW	5'-0" x 6'-6"	(1.52X1.98)
W69	WINDOW	5'-0" x 6'-6"	(1.52X1.98)
W70	WINDOW	5'-0" x 6'-6"	(1.52X1.98)
W71	WINDOW	5'-0" x 6'-6"	(1.52X1.98)
W72	WINDOW	5'-0" x 6'-6"	(1.52X1.98)
W73	WINDOW	5'-0" x 6'-6"	(1.52X1.98)
W74	WINDOW	5'-0" x 6'-6"	(1.52X1.98)
W75	WINDOW	5'-0" x 6'-6"	(1.52X1.98)
W76	WINDOW	5'-0" x 6'-6"	(1.52X1.98)
W77	WINDOW	5'-0" x 6'-6"	(1.52X1.98)
W78	WINDOW	5'-0" x 6'-6"	(1.52X1.98)
W79	WINDOW	5'-0" x 6'-6"	(1.52X1.98)
W80	WINDOW	5'-0" x 6'-6"	(1.52X1.98)
W81	WINDOW	5'-0" x 6'-6"	(1.52X1.98)
W82	WINDOW	5'-0" x 6'-6"	(1.52X1.98)
W83	WINDOW	5'-0" x 6'-6"	(1.52X1.98)
W84	WINDOW	5'-0" x 6'-6"	(1.52X1.98)
W85	WINDOW	5'-0" x 6'-6"	(1.52X1.98)
W86	WINDOW	5'-0" x 6'-6"	(1.52X1.98)
W87	WINDOW	5'-0" x 6'-6"	(1.52X1.98)
W88	WINDOW	5'-0" x 6'-6"	(1.52X1.98)
W89	WINDOW	5'-0" x 6'-6"	(1.52X1.98)
W90	WINDOW	5'-0" x 6'-6"	(1.52X1.98)
W91	WINDOW	5'-0" x 6'-6"	(1.52X1.98)
W92	WINDOW	5'-0" x 6'-6"	(1.52X1.98)
W93	WINDOW	5'-0" x 6'-6"	(1.52X1.98)
W94	WINDOW	5'-0" x 6'-6"	(1.52X1.98)
W95	WINDOW	5'-0" x 6'-6"	(1.52X1.98)
W96	WINDOW	5'-0" x 6'-6"	(1.52X1.98)
W97	WINDOW	5'-0" x 6'-6"	(1.52X1.98)
W98	WINDOW	5'-0" x 6'-6"	(1.52X1.98)
W99	WINDOW	5'-0" x 6'-6"	(1.52X1.98)
W100	WINDOW	5'-0" x 6'-6"	(1.52X1.98)

**SPECIFICATION**  
 USING STD BRICKS SUPER STRUCTURE IN CM 1:5  
 ALL R.C.C. WORK WITH SUITABLE REINFORCEMENT IN CM 1:5  
 WALL PLASTERING INSIDE AND OUTSIDE WITH CM 1:5  
 ALL WOOD WORK WITH GOOD QUALITY TEAK WOOD  
 WHITE WASH & COLOUR WASH THREE COATS.  
 PAINTING ON GRILLE & WOOD WITH THREE COATS OVER  
 ONE COAT OF PRIMER WITH APPROVED PAINT.  
 CEILING PLASTERING WITH CM 1:5

NOTE: All Dimensions are in FT (Meter)

AREA STATEMENT	F.S.I		NON F.S.I	
	Sq.Ft	Sq.M	Sq.Ft	Sq.M
PLOT AREA	4502	418.40		
GROUND FLOOR	1548	143.87	99.13	9.21
FIRST FLOOR	1711	159.01		
SECOND FLOOR	1711	159.01		
THIRD FLOOR	1711	159.01		
TERRACE FLOOR			195	18.14
TOTAL BUILT UP AREA	6681	620.91		
ALLOWABLE F.S.I	6793	627.60		
ACHIEVED F.S.I	6681	620.91		
PLOT COVERAGE	38.00%			

R. Rajeswari

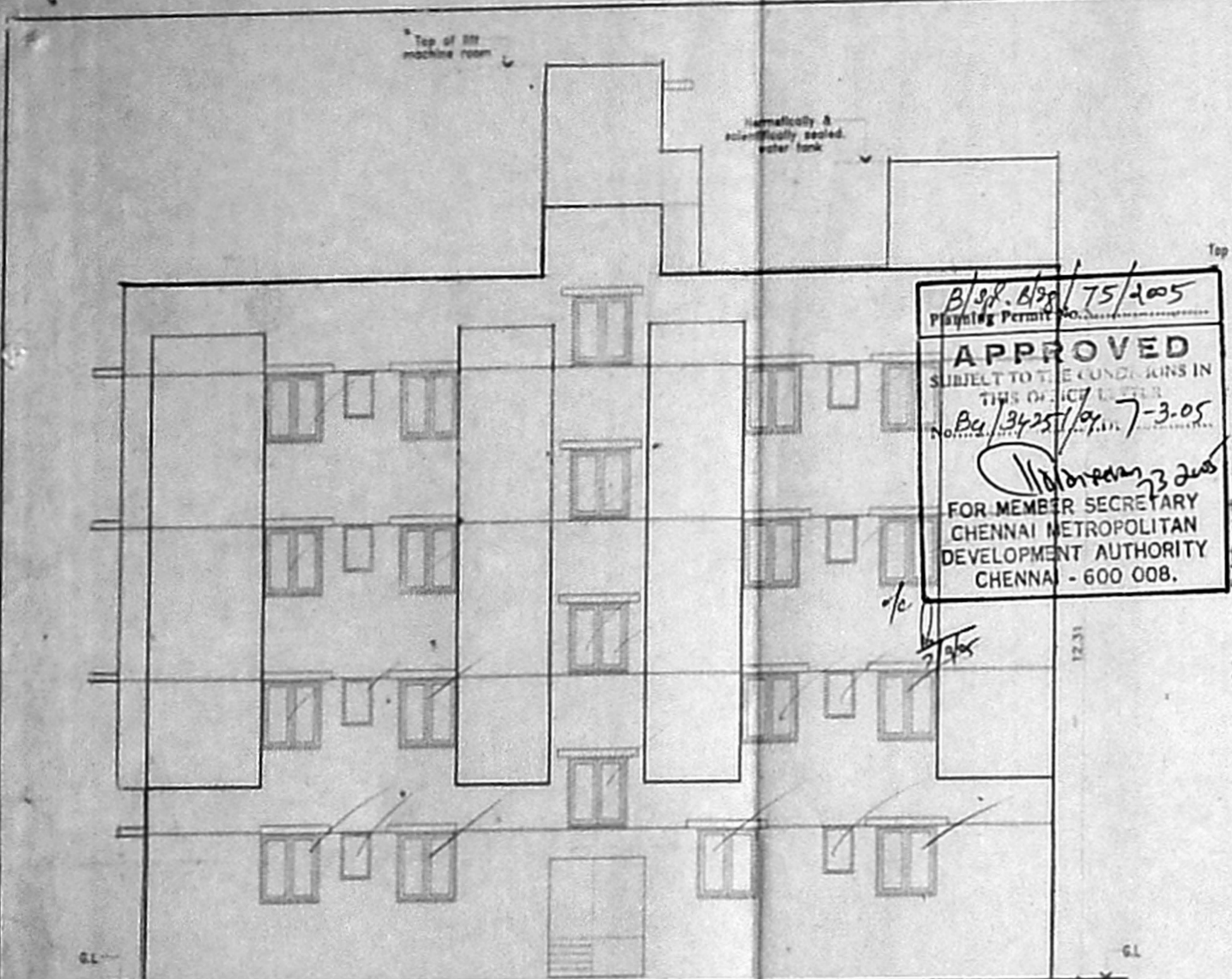
**COLOUR INDEX**  
 Proposed  
 Road  
 Boundary

**PROJECT**  
 PROPOSED RESIDENTIAL FLATS AT PLOT NO.40/1 DOOR NO.9  
 UNITED INDIA COLONY FIRST CROSS STREET, KODAMBAKKAM  
 CHENNAI - 600 024 COMPRISED IN T.S.NO.38, BLOCK NO.41  
 OF PULIYUR VILLAGE, EGMORE, NUNGAMBAKKAM TALUK,  
 CHENNAI DISTRICT.

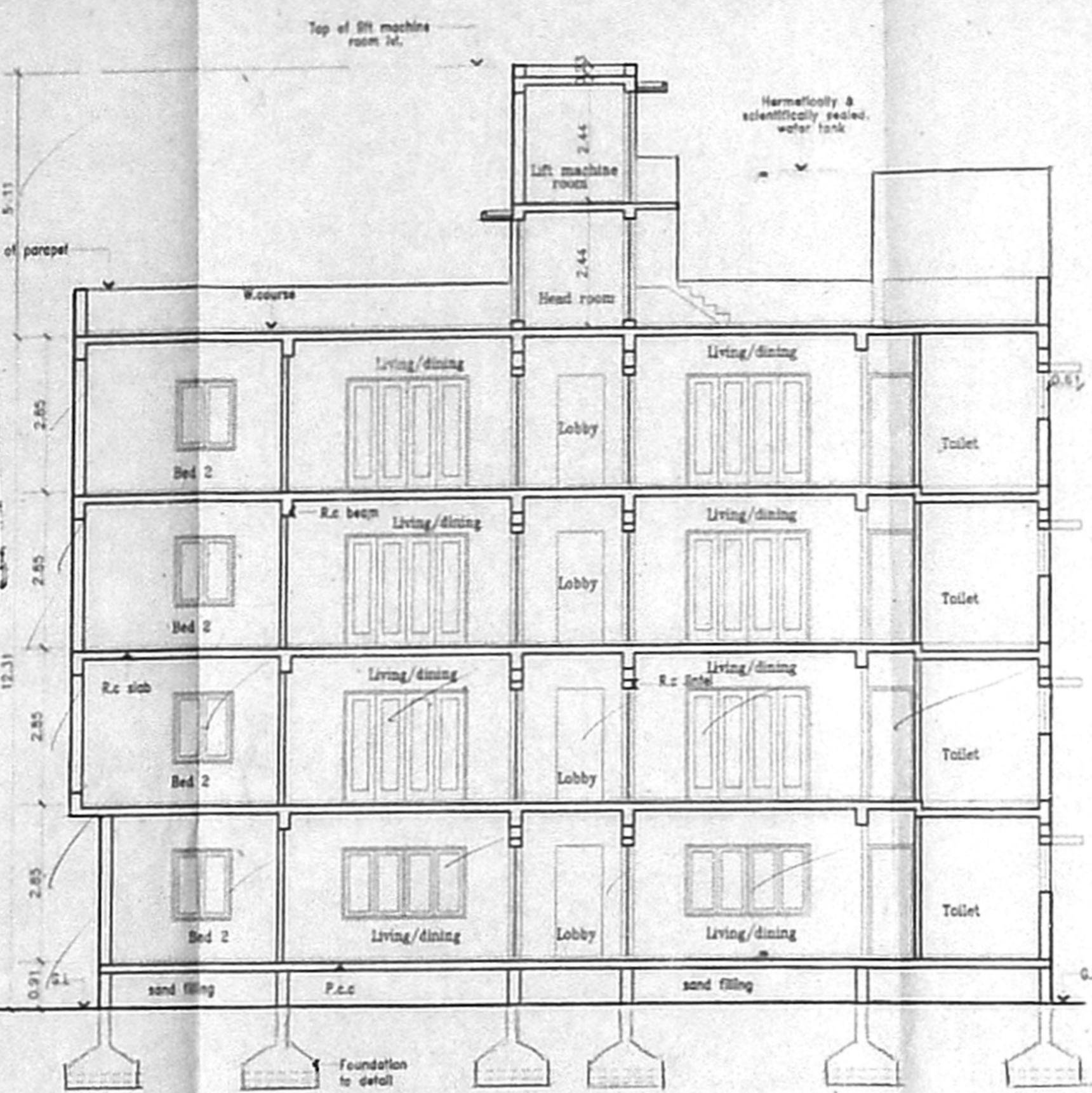
**AUTHORITIES APPROVAL PLAN 04-10**

SCALE 1"=8'-0" (1:100) DRAWN S.RAMESH  
 DATE 15/10/2004 CHECKED

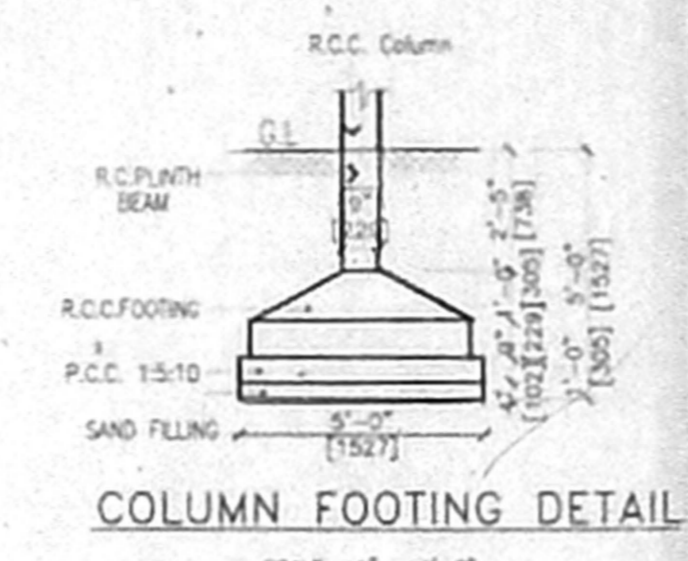
**JEEVAN & ASSOCIATES** 50  
 68/1 (OLD 70/1) P.C. HOSTEL ROAD,  
 CHETPET, CHENNAI - 600 031.



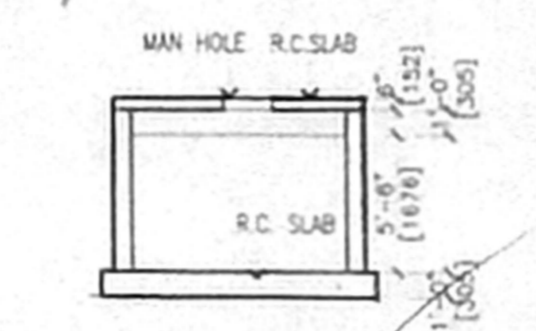
FRONT ELEVATION



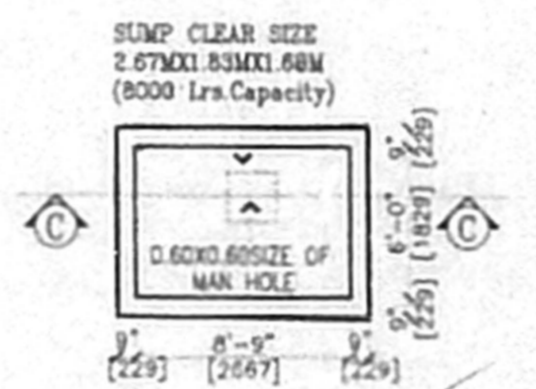
SECTION 'AA'



COLUMN FOOTING DETAIL

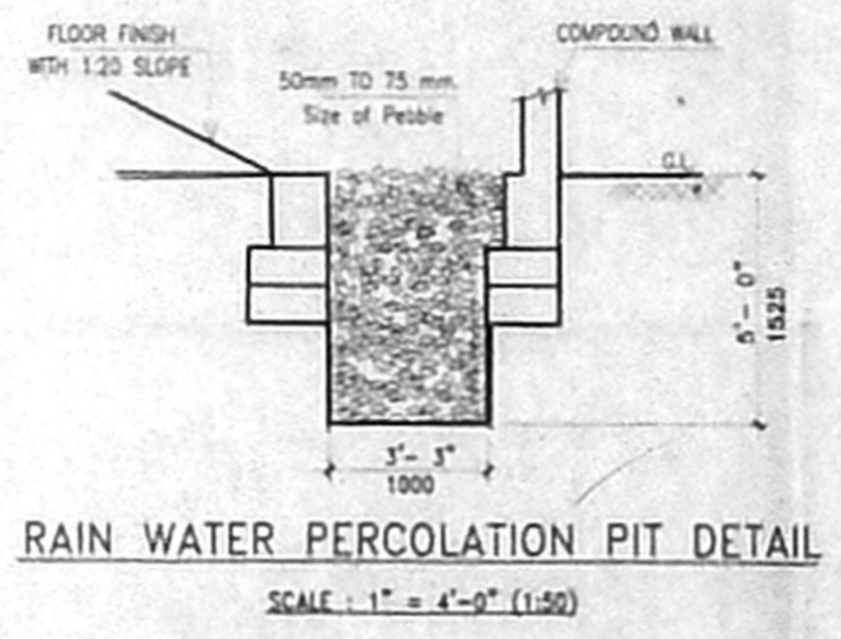


SECTION ON "CC"

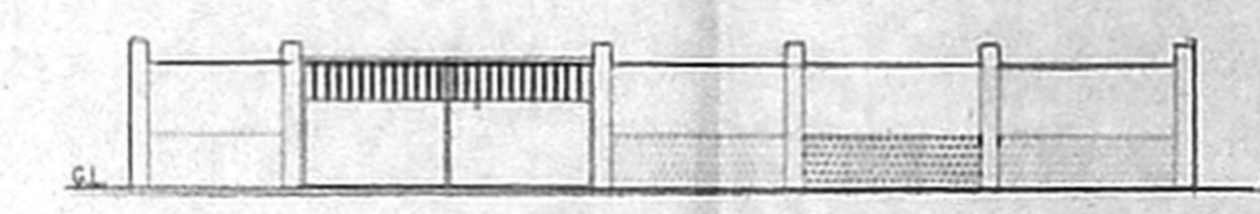


U.G. SUMP DETAIL

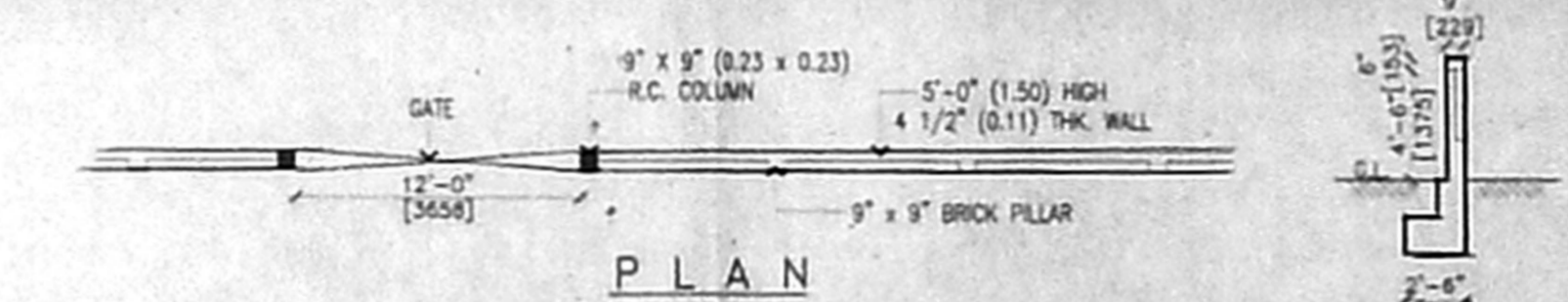
Dwarf wall detail



RAIN WATER PERCOLATION PIT DETAIL

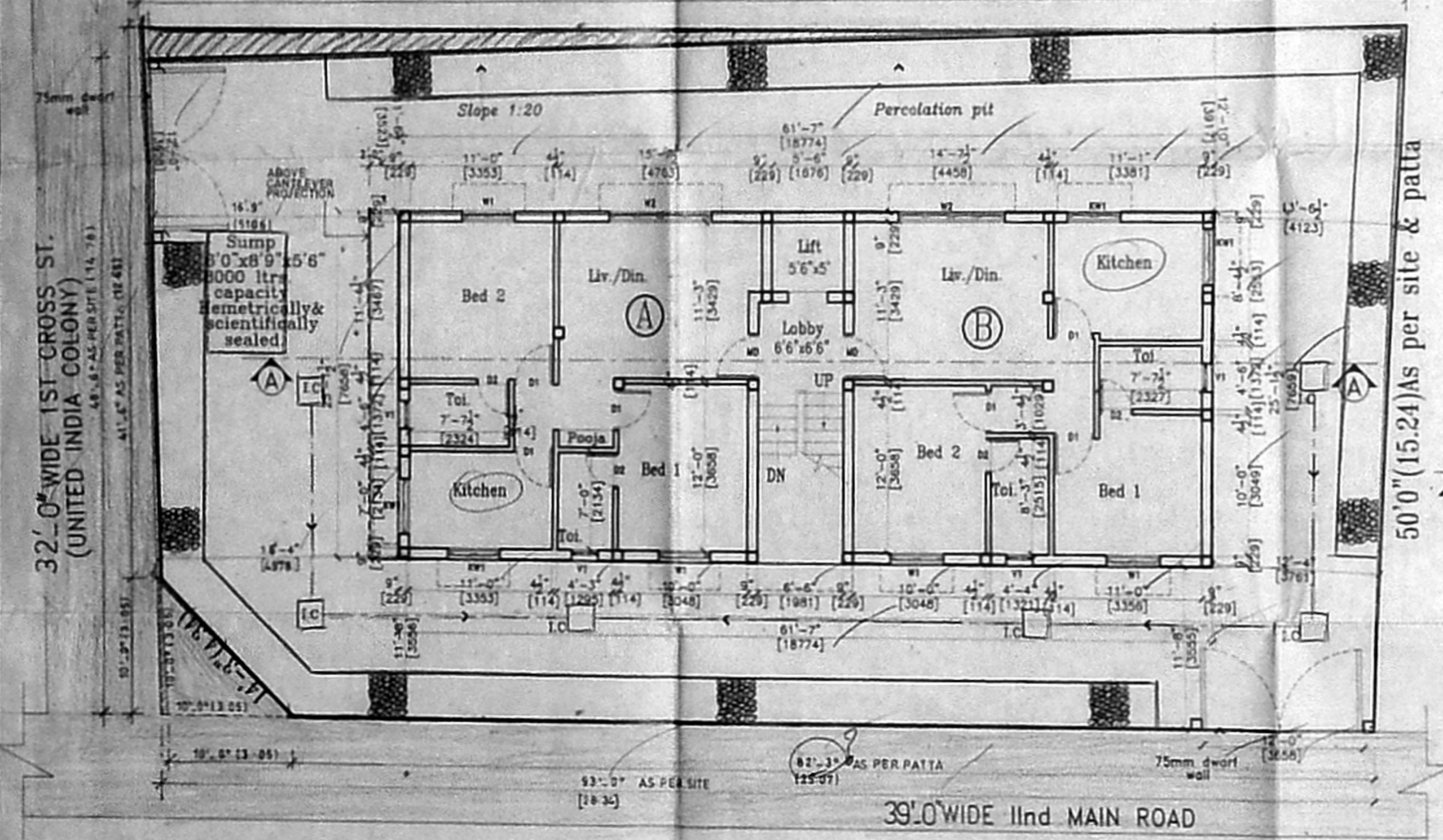


ELEVATION

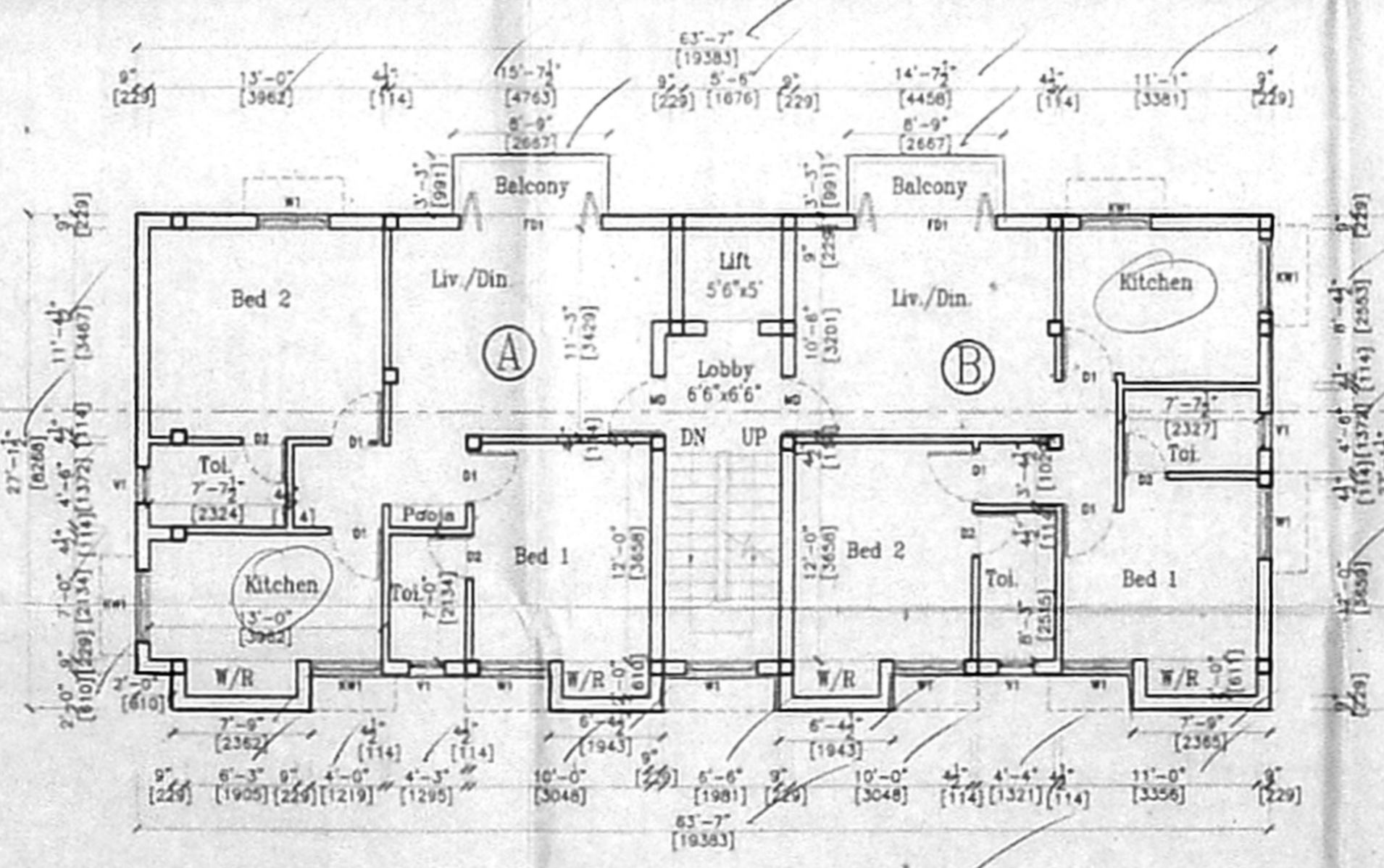


PLAN COMPOUND WALL DETAIL

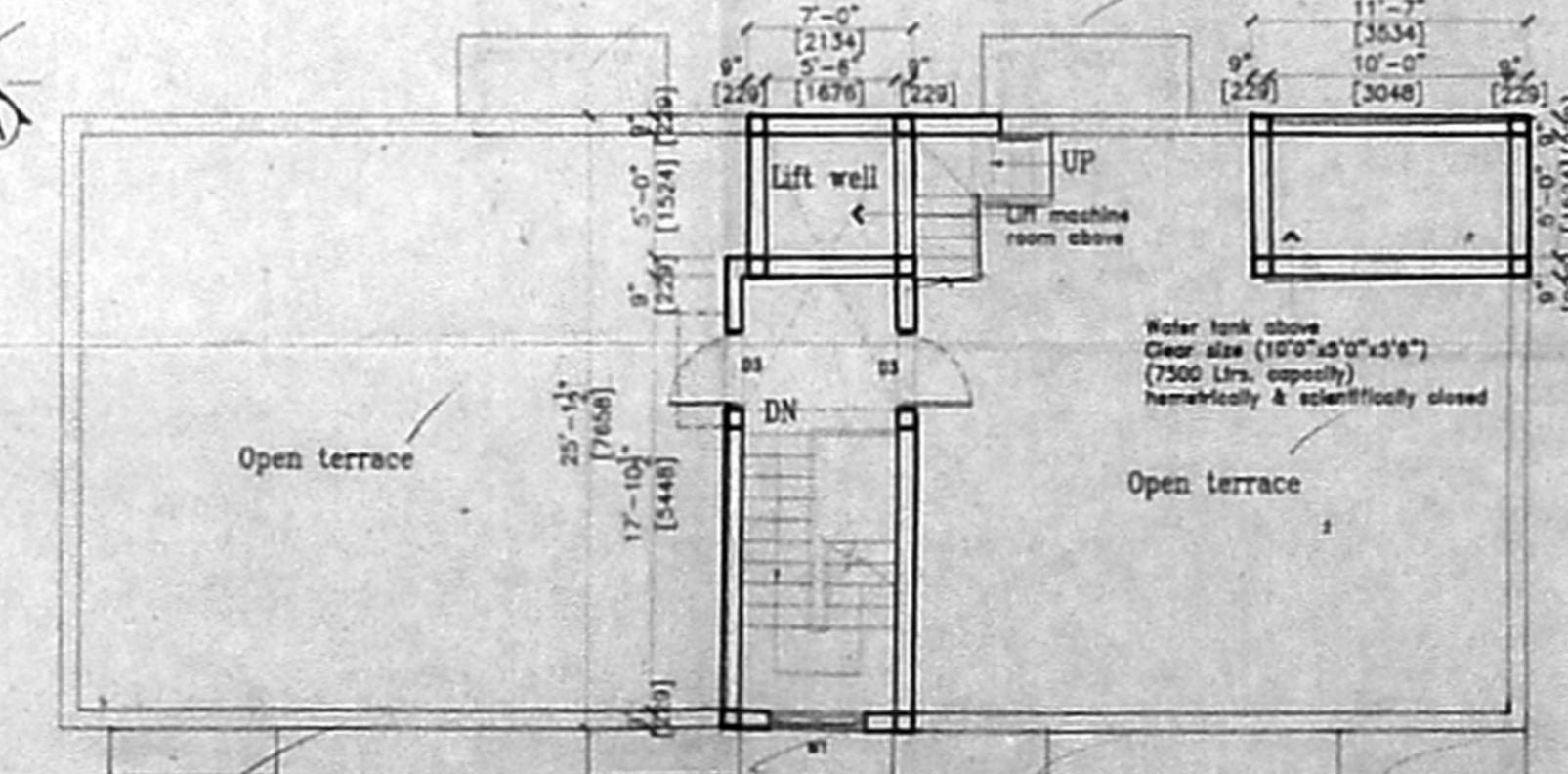
SECTION



SITE CUM GROUND FLOOR PLAN - 226



TYPICAL FLOOR PLANS (1st, 2nd & 3rd) - 2x3 = 626



ROOF PLAN